



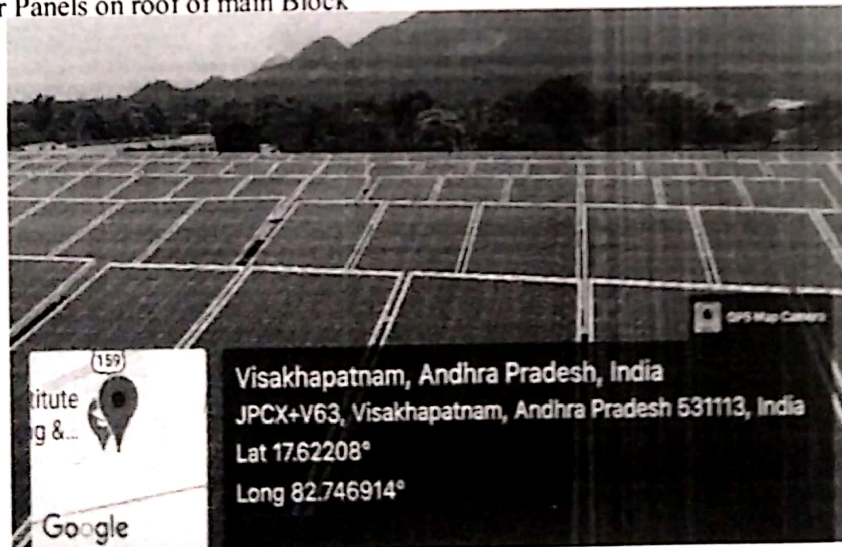
AVANTHI INSTITUTE OF ENGINEERING AND TECHNOLOGY
Tamaram, Makavarapalem, Visakhapatnam

The institute has facilities for alternate sources of energy and energy conservation measures

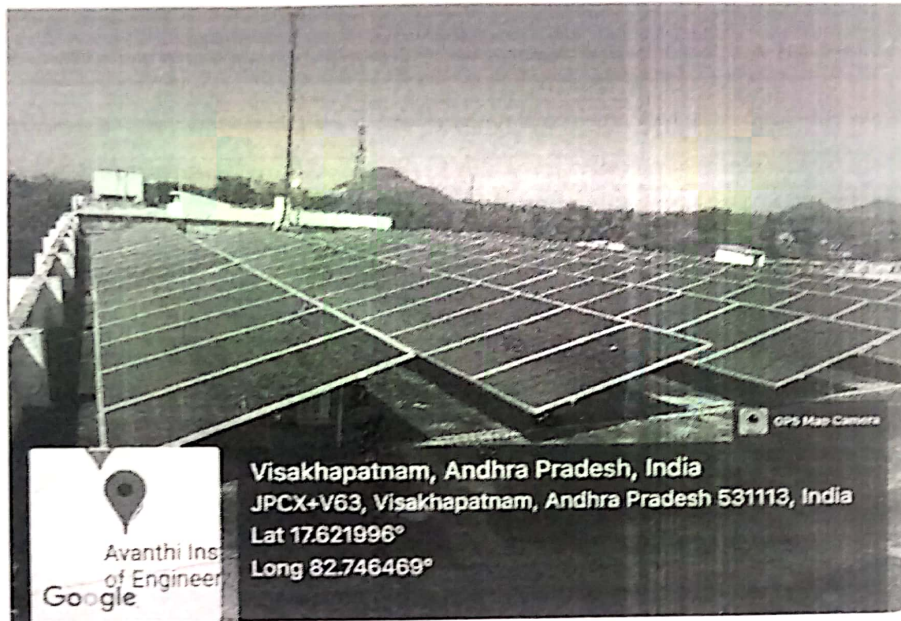
- Solarenergy
- Wheeling to the Grid
- Sensor-based energy conservation
- Use of LED bulbs/power efficient equipment.

S. No.	Document
1)a)	Solar Panels on roof of main Block
1)b)	Solar panels installed on the roof of the college Decennial Block
1)c)	Meter for Solar energy system
2	Wheeling to the Grid
3	Sensor-based energy conservation
4)a)	LED Lights in College
4)b)	Pole LED Lights installed in college Campus
5)	LED Lights installed in conference room
6)	LED Lights installed in college computer labs.

1) a) Solar Panels on roof of main Block



1) b) Solar panels installed on the roof of the college Decennial Block

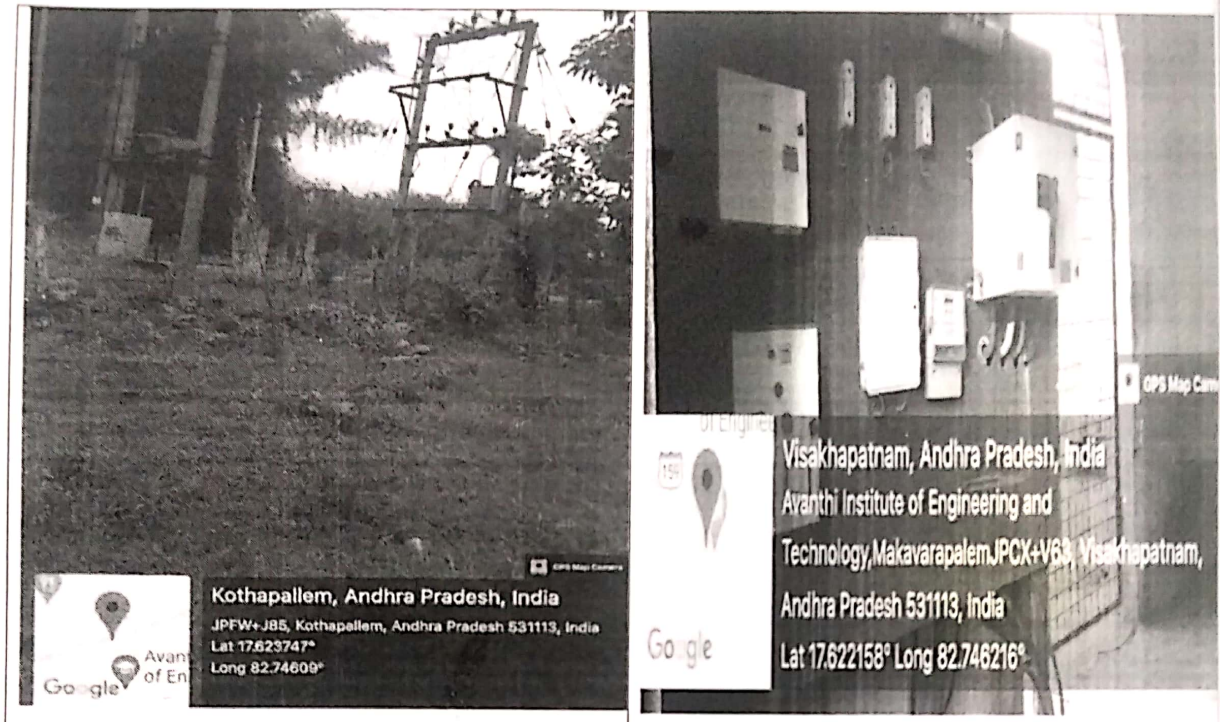


1) c) Meter for Solar energy system



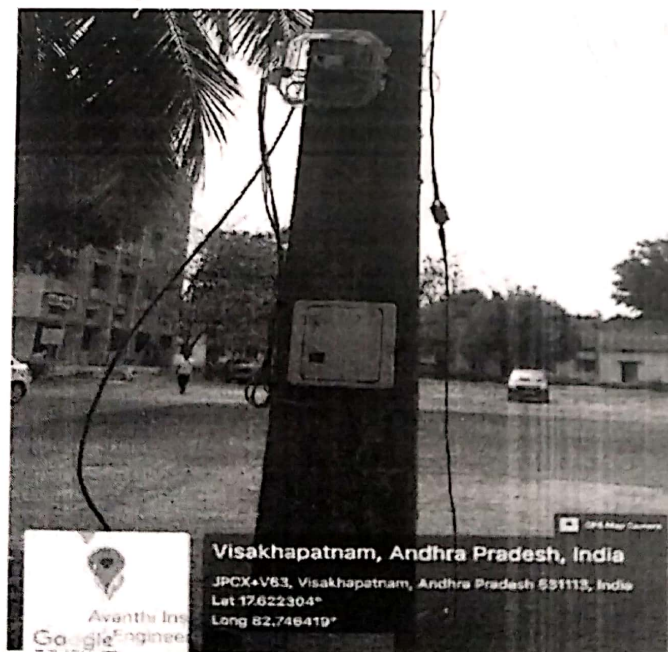
2) Wheeling to the Grid

Wheeling to the Grid installed north side of college



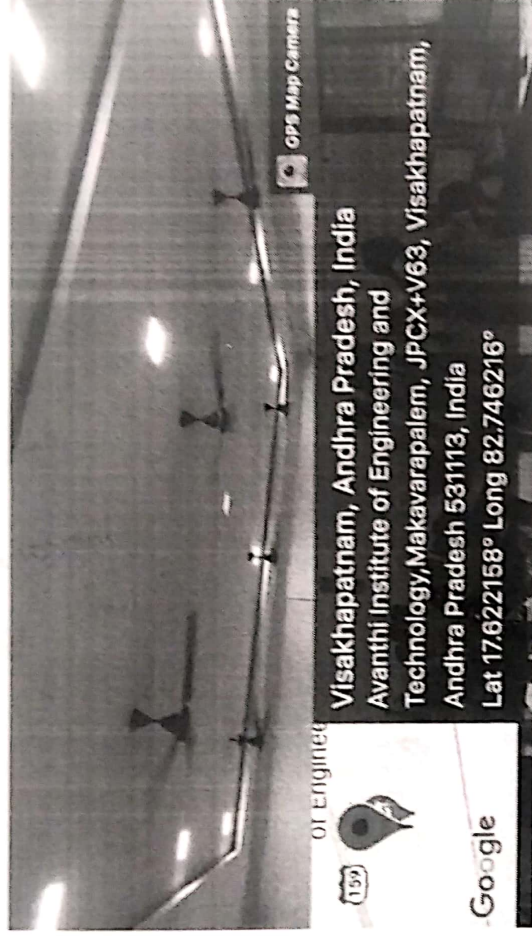
3) Sensor-based energy conservation

Sensor equipment has been installed at opposite Main block for automatic On / Off to Pole lights in the campus for Power savage

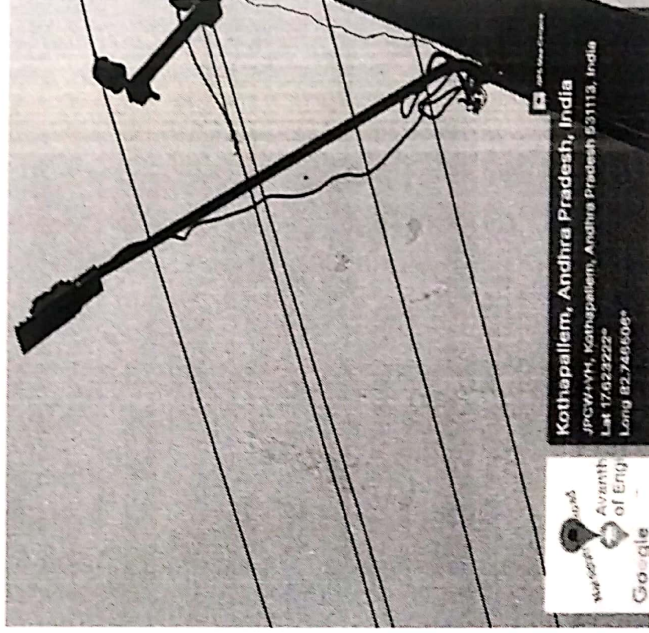


4 a) LED Lights in College

LED Lights installed in Labs and classrooms



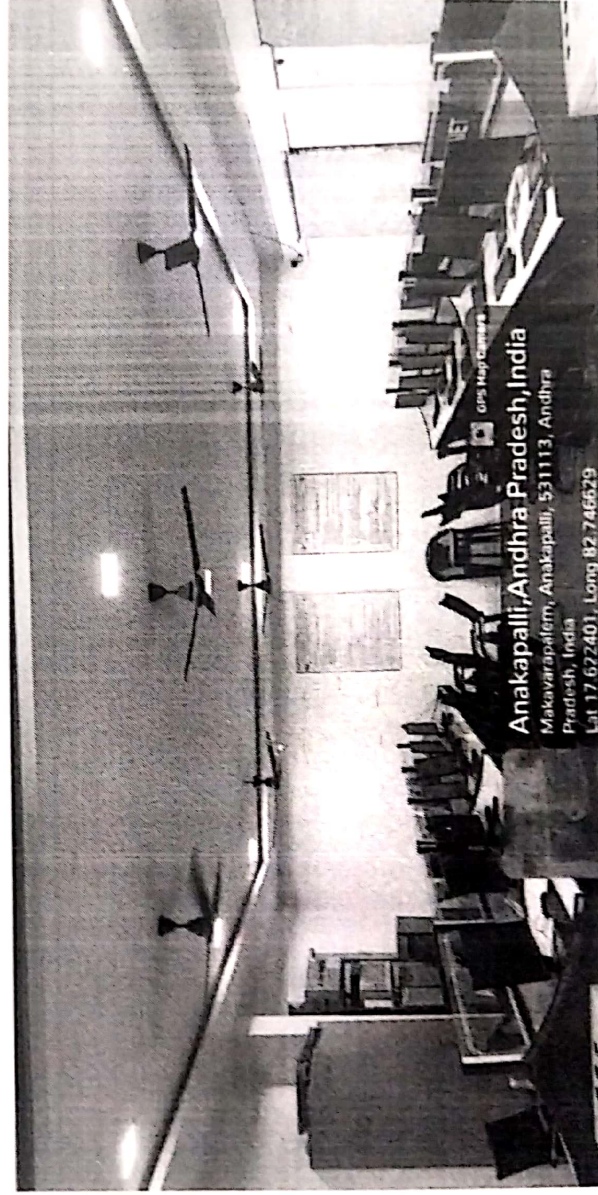
4) b) Pole LED Lights installed in college Campus



5) LED Lights installed in conference room



6) LED Lights installed in college computer labs.





AVANTHI INSTITUTE OF ENGINEERING AND TECHNOLOGY

Accredited by NAAC with 'A+' Grade

Affiliated to JNTUK, KAKINADA, Approved by AICTE

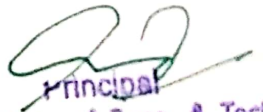
Makavarapalem, Narisipatnam, Visakhapatnam-531113, A.P

7.1.2: The Institution has facilities for alternate sources of energy and energy conservation measures :

S.No	Name of the facility with location	Description	Links for Geotagged photos and bills
1.	Solar energy Location:- Roof of the Main Building Roof of the Decennial Block	Solar power plant was installed in June 2018. A total of 118625 units/Year of energy is generated through the solar plant till date and reducing the Carbon Di-Oxide	https://avanthienggcollege.ac.in/assets/images/gallery/energyconservation1.jpg
			https://avanthienggcollege.ac.in/assets/images/gallery/energyconservation4.jpg
			https://avanthienggcollege.ac.in/assets/images/gallery/eng2.jpg
			https://avanthienggcollege.ac.in/assets/images/gallery/solarbill1.pdf
			https://avanthienggcollege.ac.in/assets/images/gallery/engwheel1.jpg
2.	Wheeling to the Grid Location:- Installed at beside NRPA/ISP main road	Net Metering facility is given to the solar plant. by using Solar Plant 118625 Unit power will be generated	https://avanthienggcollege.ac.in/assets/images/gallery/engwheel2.jpg
			https://avanthienggcollege.ac.in/assets/images/gallery/engwheel3.jpg
			https://avanthienggcollege.ac.in/assets/images/gallery/energybill.pdf
3.	Sensor -Based Energy Conservation Location:- Infront of Hostel Building		
4.	Use of LED bulbs/ power efficient equipment	Usage of LED lights and power efficient devices	https://avanthienggcollege.ac.in/assets/images/gallery/energyconservation2.jpg

		encouraged in the campus. All the conventional high power causing devices are gradually replaced with LED lights and power saving equipment.	https://avanthienggcollege.ac.in/assets/images/gallery/eng2.jpg
	Location: Installed at various places in college Labs, Class rooms, Hostels and college campus.	1.Total No. of Bulbs : 1020 2.Total No. of LED : 855 3.Total Lighting Load in Kilo Watts : 50680 4.LED Lights Load : 47880 5. Total No. of AC 's : 17 6. Total No. of 5 Star AC's : 2 7. Total No. of 4 Star AC's: 15	https://avanthienggcollege.ac.in/assets/images/gallery/energyconservation4.jpg https://avanthienggcollege.ac.in/assets/images/gallery/engled.jpg https://avanthienggcollege.ac.in/assets/images/gallery/ledbulbs.pdf
5.	Location LED Lights installed at Conference Hall	Usage of LED lights and power efficient devices encouraged in the campus. All the conventional high power causing devices are gradually replaced with LED lights and power saving equipment.	https://avanthienggcollege.ac.in/assets/images/gallery/confirenceledbulbs.pdf
6.	Location LED Light installed at Computer Labs	Usage of LED lights and power efficient devices encouraged in the campus. All the conventional high power causing devices are gradually replaced with LED lights and power saving equipment.	https://avanthienggcollege.ac.in/assets/images/gallery/computerlabeledbulbs.pdf


Co-Coordinator


Principal
Avanathi Institute of Engg. & Technology
Tamaram, Makavarapalem Md.,
521 412